

**beta Actin Antibody(HRP Conjugated)**  
**Mouse mAb**  
**Catalog # AP90056****Specification**

---

**beta Actin Antibody(HRP Conjugated) - Product Information**

Application	WB
Primary Accession	<a href="#">P60709</a>
Reactivity	Plants, Rat, Plants
Clonality	Monoclonal
<b>Other Names</b>	
ACTIN; ACTB; BETA-ACTIN; beta actin; actin beta;	
Isotype	Mouse IgG2b
Host	Mouse
Calculated MW	41737 Da

**beta Actin Antibody(HRP Conjugated) - Additional Information**

Dilution	WB~~1:1000
Purification	Affinity-chromatography
Immunogen	A synthesized peptide derived from human beta Actin
Description	beta-Actin is one of six different actin isoforms that have been identified. The actin molecules found in cells of various species and tissues tend to be very similar in their immunological and physical properties. Therefore, Antibodies against beta-Actin are useful as loading controls for Western Blotting. However it should be noted that levels of beta-Actin may not be stable in certain cells. For example, expression of beta-Actin in adipose tissue is very low and therefore it should not be used as loading control for these tissues. Rabbit IgG in phosphate buffered saline , pH 7.4, 150mM NaCl, 0.02% sodium azide and 50% glycerol. Store at +4°C short term. Store at -20°C long term. Avoid freeze / thaw cycle.
Storage Condition and Buffer	

**beta Actin Antibody(HRP Conjugated) - Protein Information****Name** ACTB**Function**

Actin is a highly conserved protein that polymerizes to produce filaments that form cross-linked networks in the cytoplasm of cells (PubMed:<a href="http://www.uniprot.org/citations/25255767"

target="\_blank">25255767</a>, PubMed:<a href="http://www.uniprot.org/citations/29581253" target="\_blank">29581253</a>). Actin exists in both monomeric (G-actin) and polymeric (F-actin) forms, both forms playing key functions, such as cell motility and contraction (PubMed:<a href="http://www.uniprot.org/citations/29581253" target="\_blank">29581253</a>). In addition to their role in the cytoplasmic cytoskeleton, G- and F- actin also localize in the nucleus, and regulate gene transcription and motility and repair of damaged DNA (PubMed:<a href="http://www.uniprot.org/citations/29925947" target="\_blank">29925947</a>). Plays a role in the assembly of the gamma-tubulin ring complex (gTuRC), which regulates the minus-end nucleation of alpha-beta tubulin heterodimers that grow into microtubule protofilaments (PubMed:<a href="http://www.uniprot.org/citations/39321809" target="\_blank">39321809</a>, PubMed:<a href="http://www.uniprot.org/citations/38609661" target="\_blank">38609661</a>). Part of the ACTR1A/ACTB filament around which the dynactin complex is built (By similarity). The dynactin multiprotein complex activates the molecular motor dynein for ultra-processive transport along microtubules (By similarity).

### Cellular Location

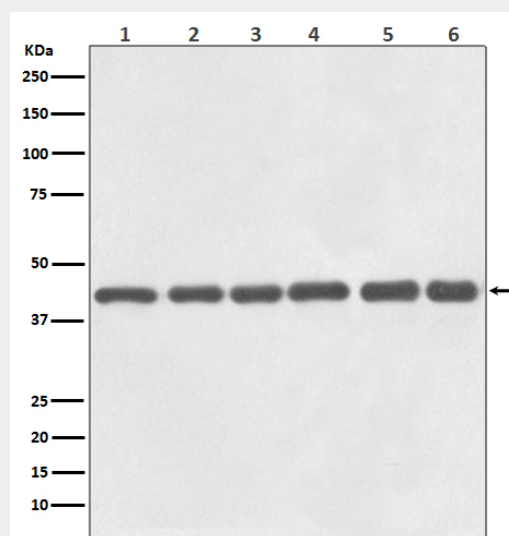
Cytoplasm, cytoskeleton. Nucleus Note=Localized in cytoplasmic mRNP granules containing untranslated mRNAs.

### beta Actin Antibody(HRP Conjugated) - Protocols

Provided below are standard protocols that you may find useful for product applications.

- [Western Blot](#)
- [Blocking Peptides](#)
- [Dot Blot](#)
- [Immunohistochemistry](#)
- [Immunofluorescence](#)
- [Immunoprecipitation](#)
- [Flow Cytometry](#)
- [Cell Culture](#)

### beta Actin Antibody(HRP Conjugated) - Images



Western blot analysis of beta Actin expression in (1) Hela cell lysate, (2) Human liver lysate, (3) 3T3 cell lysate, (4) Mouse brain lysate, (5) PC12 cell lysate, (6) Rat heart lysate.